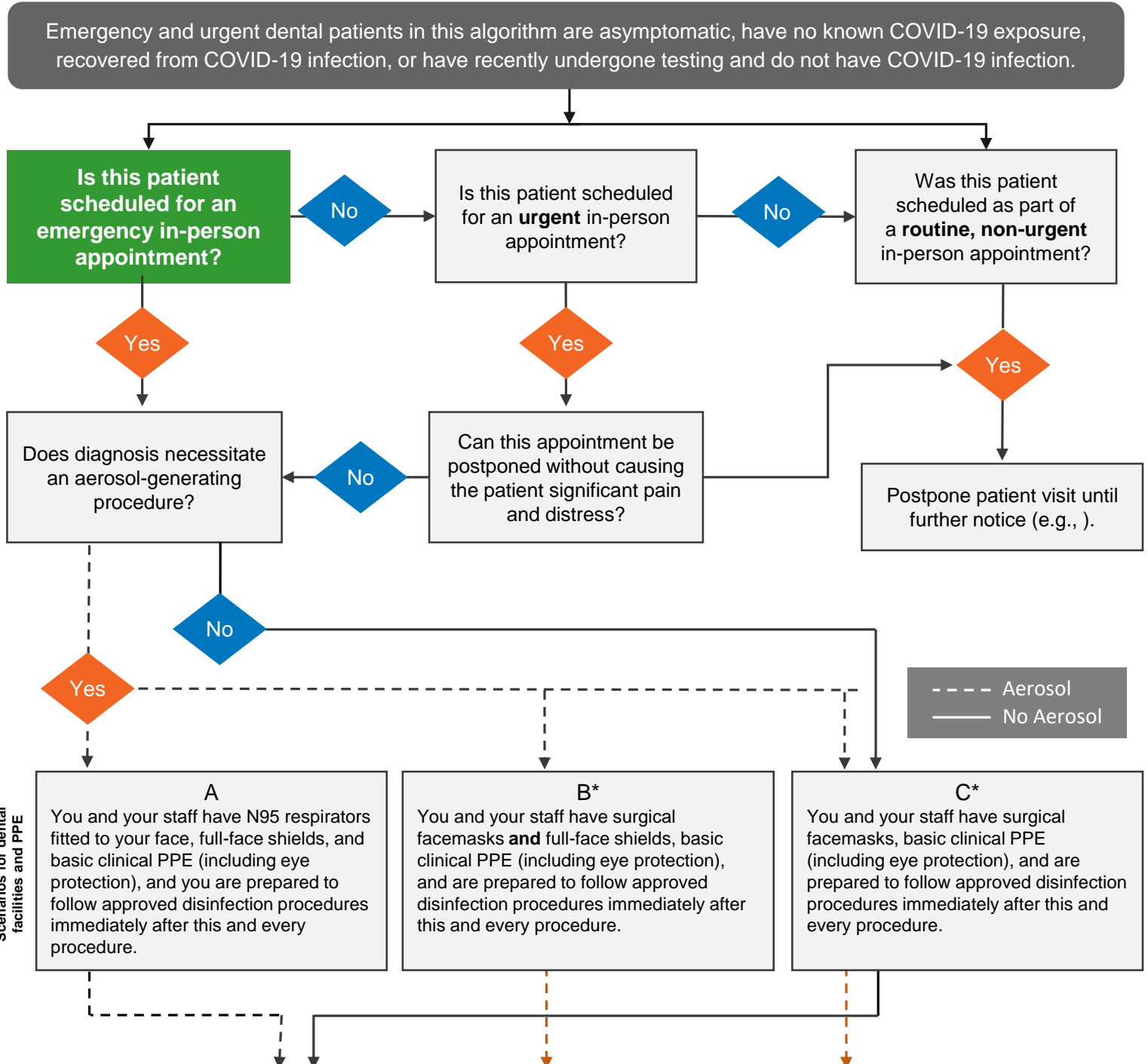


# Algorithm 3: Interim Guidance to Minimize Risk of COVID-19 Transmission for Emergency and Urgent Dental Patients and HCP

Updated: 4/1/2020

### Summary of Procedures

1. Clinic staff should speak to all patients 1-2 working days (or sooner if able) before any scheduled session.
2. Call patients for whom in-person visit may not be necessary and re-schedule.
3. See emergency triage and COVID-19 infection screening procedures.



Risk for Transmission to HCP and patients	Low risk	Moderate risk*	Moderate-high risk*
<b>Quarantine for HCPs</b>	No 14-day quarantine required	<ul style="list-style-type: none"> <li>• Use clinical judgment and take all precautions to prevent transmission.</li> <li>• Suggest that the patient is tested for COVID-19 infection after dental treatment. If positive, dental HCP should quarantine for 14 days.</li> </ul>	<ul style="list-style-type: none"> <li>• Given that asymptomatic patients may carry the virus, CDC suggests a 14-day quarantine.</li> <li>• Use clinical judgment and take all precautions to prevent transmission.</li> <li>• If treatment is implemented, require that the patient is tested for COVID-19 infection immediately after dental care; if positive, dental HCP should quarantine for 14 days.</li> </ul>
<b>Recommended Treatment Plan for Patient</b>	Treat Patient	<ul style="list-style-type: none"> <li>• Refer patient to emergency department or dental facility that meets criteria for scenario A. If not feasible, treat patient.*</li> </ul>	

\*A less protective option than N95 respirators is the use of a surgical facemask with a full-face shield; use of a surgical face mask alone may be considered if the supply chain of respirators cannot meet demand with the understanding that this may increase the risk of infection of dental health care professionals engaged in the care and community transmission.

These algorithms are interim guidance informed by the latest recommendations from health care agencies (e.g., World Health Organization, Centers for Disease Control and Prevention) and the scientific literature. They will be revised and updated as new data emerge.

HCP: healthcare personnel; PPE: personal protective equipment.