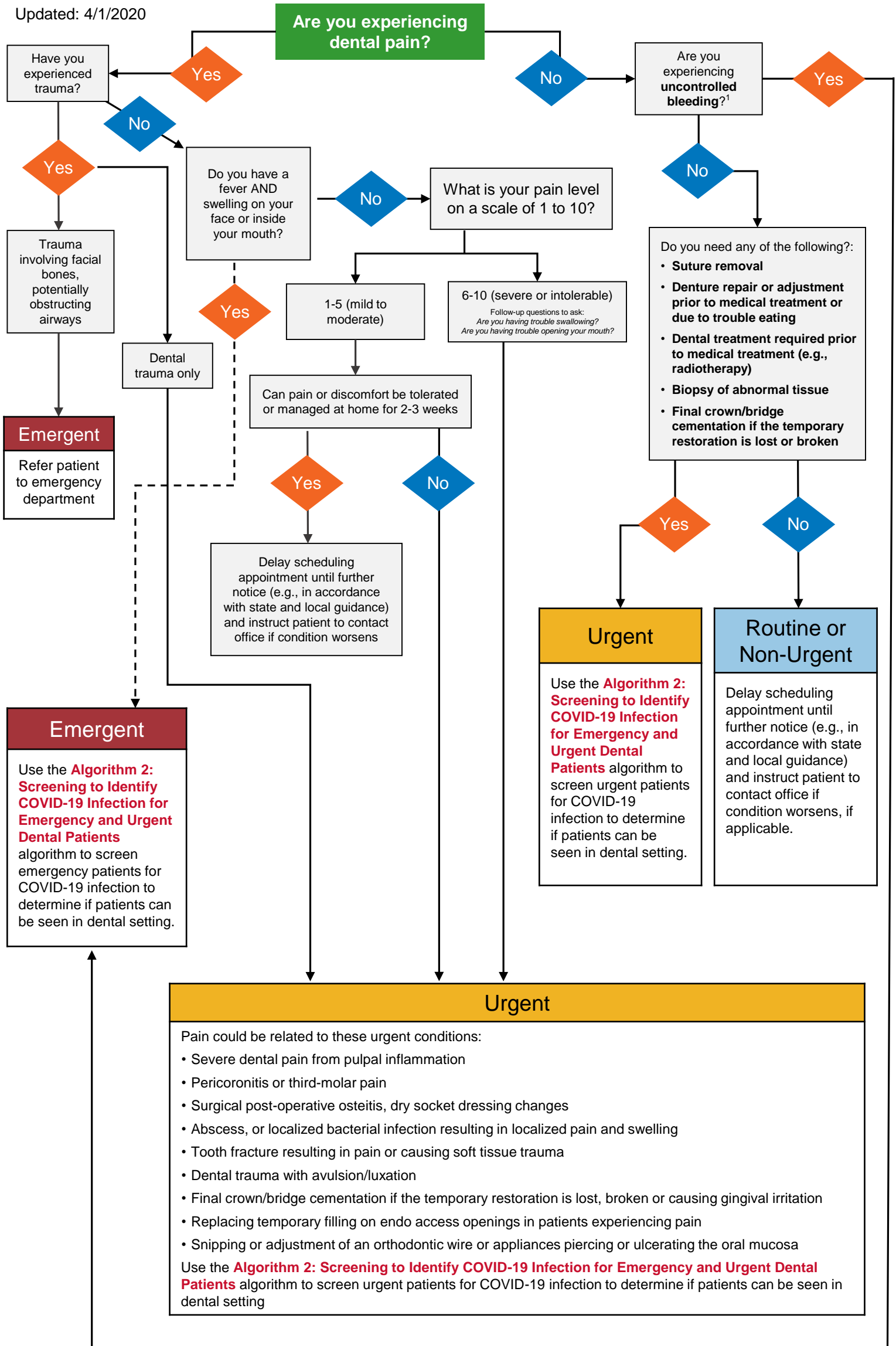


# Algorithm 1: Interim Guidance for Triageing Patients for Emergency and Urgent Dental Care

Updated: 4/1/2020



These algorithms are interim guidance informed by the latest recommendations from health care agencies (e.g., World Health Organization, Centers for Disease Control and Prevention) and the scientific literature. They will be revised and updated as new data emerge.